

Celebrity **X** Cruises®

SAIL BEYOND BORDERS



To book your vacation, visit celebrity.com, call us at 1.888.751.9303, or contact your travel agent.

All images of Celebrity FloraSM are artistic renderings based on current development concepts, which are subject to change without notice. Celebrity FloraSM and FloraSM are trademarks of Celebrity Cruises. ©2017 Celebrity Cruises. Ships' registry: Malta and Ecuador.

CEOR17

EVOLUTION MEETS REVOLUTION
Introducing **CELEBRITY FLORASM**. A new ship designed for the Galapagos Islands.

CELEBRITY FLORA. STEP ABOARD THE GALAPAGOS ISLANDS.

A ship that's a true complement to the destination and merges seamlessly with the surroundings.

One of the most eco-friendly and environmentally safe ships sailing the planet.

Introducing Celebrity FloraSM, the first ship of its kind to be designed and built specifically with the destination in mind. Every space, including the all-suites accommodations, features our innovative outward-facing concept, so the destination is always the center of attention at every turn. By using natural materials inspired by the islands, we've created a ship that's a true complement to the destination and merges seamlessly with the surroundings to create a greater connection between you, the ocean, and the breathtaking islands.

In the spirit of continuous improvement and innovation in the Galapagos Islands, and to ensure we further our position on protecting the islands and the pristine water around them, Celebrity Flora was designed with every state-of-the-art option and latest technology—from a Dynamic Positioning System that enables the ship to stay on station without the use of anchors to help protect the seas to solar panels that supplement electricity to help reduce emissions. The result is one of the most eco-friendly and environmentally safe ships sailing the planet.

THIS IS WHERE YOU FIT IN.

*Every stateroom on board
is a Suite—the largest and most
luxurious in the Galapagos Islands.*

Just as important as the destination is another crucial element we took into consideration when designing Celebrity FloraSM—*you*. We designed the largest and most luxurious accommodations in the Galapagos Islands. In fact, every stateroom on board is a Suite, featuring incredible interior design using sustainable, natural materials that complement the destination perfectly and make unwinding after a day of adventure easier than ever. There's nothing more satisfying than traveling with family and friends, so we've created new suite connections that allow you to join two suites together for one incredible space to get away together.

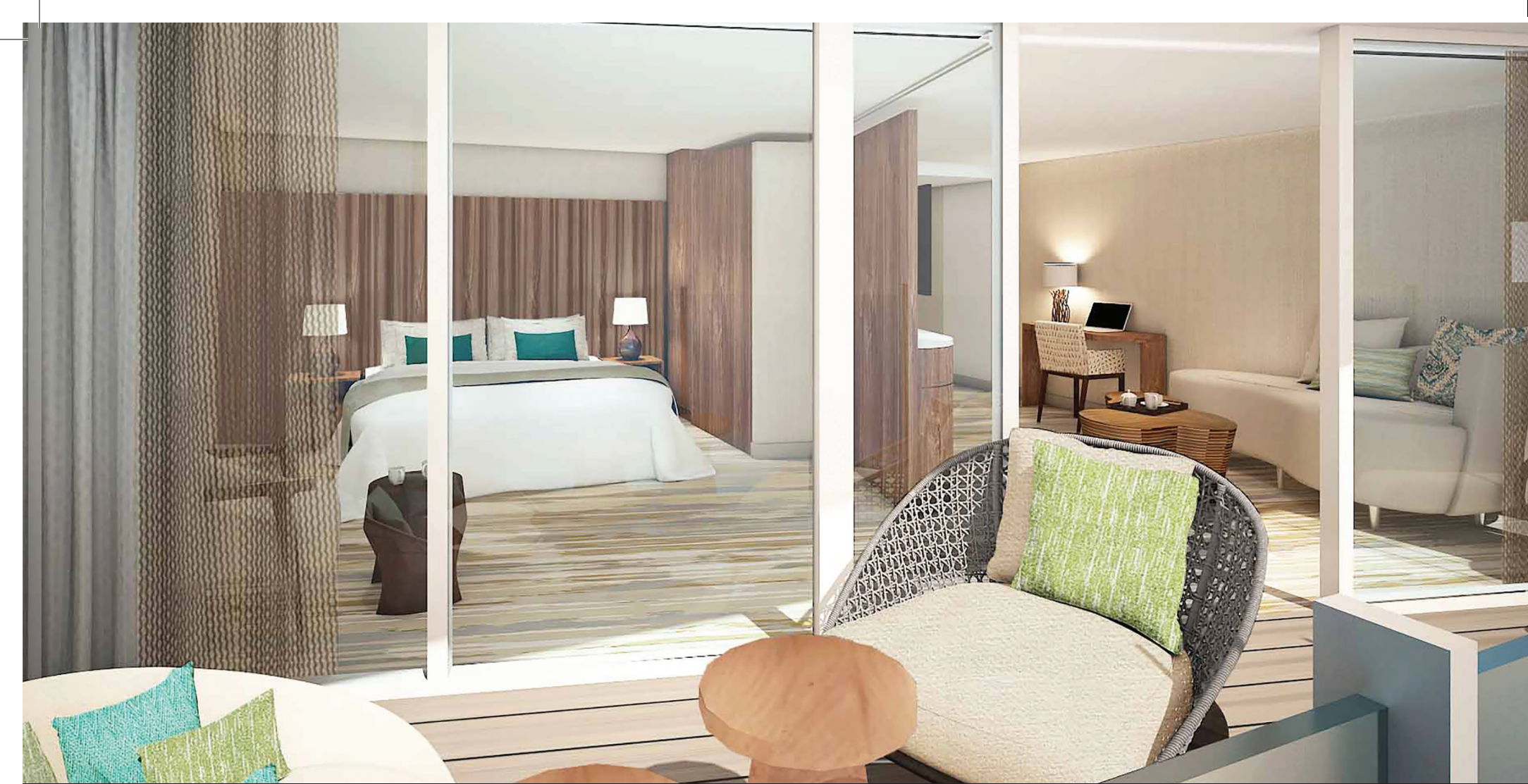


PENTHOUSE SUITE

Up to 1,288 total square feet

The largest, most luxurious suites sailing the Galapagos Islands offering indulgent home-away-from-home comfort. Even the bathrooms feature outward-facing spa tubs and a floor-to-ceiling window, so spectacular views are featured in every room. These lush havens are the ultimate complement to this extraordinary destination.

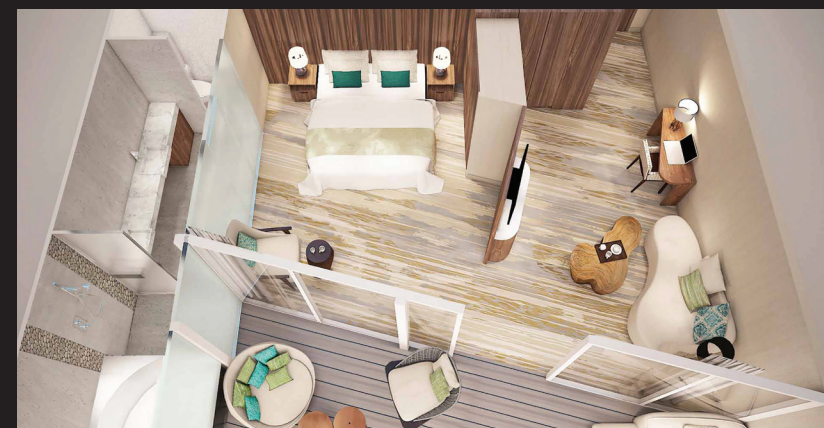




ROYAL SUITE

559 total square feet

Royal Suites are modern refuges thoughtfully designed to pamper you while highlighting the destination, featuring a separate living area, bedroom, and private veranda. A king-sized bed from our signature Cashmere Bedding Collection faces outward and so does the spa tub in the bathroom (with a separate shower area), so you'll enjoy stunning views from every angle of the room.



ULTIMATE & PREMIUM SKY SUITE WITH INFINITE VERANDA

337 to 365 total square feet

New to the Galapagos Islands is the Infinite VerandaSM—an innovation takes your entire room to the water's edge—including the outward facing spa tub and shower. Enjoy open-air access to the sea and the islands with the touch of a button.





SKY SUITE WITH INFINITE VERANDA

325 total square feet

The Sky Suite with Infinite VerandaSM offers the unique ability to create an open-air room with the touch of a button for a greater connection to the sea and the islands. They feature a modern layout with an etched glass divider separating the bedroom and bathroom and a king-sized bed from our Cashmere Bedding Collection that faces outward for stunning views from the moment you wake to the moment you retire for the evening.



SKY SUITE WITH VERANDA

330 total square feet

The Sky Suite with Veranda is the perfect sanctuary. The spacious veranda offers luxurious outdoor living. The king-sized bed faces the floor-to-ceiling windows, the veranda, and the glorious Galapagos Islands beyond. The bathroom features a vanity with double faucets, porcelain tile, stone countertops, and a sliding panel that lets you open the room to the bedroom and the window, so incredible views are available at all times.



THE THEORY OF (SHIP) EVOLUTION.

Our visionary outward-facing concept maximizes your sense of being in the destination—even when you're on board. The indoor and outdoor spaces on Celebrity FloraSM are large outward-facing sanctuaries that showcase endless ocean views and the extraordinary Galapagos Islands. After all, there are few places in the world where this innovative concept would benefit world travelers more, so we took full advantage of the opportunity to create spaces—and a ship—that will connect you to the islands and the unique wildlife so completely, you won't just be visiting this incredible corner of the world, you'll be *experiencing* it—every moment you're there.



DISCOVERY LOUNGE

This is the hub of activity on board where you'll enjoy presentations and briefings put on by our Naturalists. You'll learn all about the activities and excursions you'll be able to participate in throughout your cruise. Our Naturalists and crew members will guide you in personalizing your experience in the islands to ensure your vacation is exactly what you'd hoped for. But, the Discovery Lounge isn't all business. There's a full bar, a stage for entertainment, and comfortable seating, including sofas and club chairs for relaxing. The walls are almost all glass, so stunning views are always a part of the ambiance—day and night.



OBSERVATORY

Want to learn even more about the Galapagos Islands wildlife? The history of the islands? The sea life in the water just below your feet? Head up to the Observatory—a cozy, inviting area featuring a complete library dedicated to the Galapagos Islands. Surrounded by floor-to-ceiling windows (yes, there's a reason we named it the Observatory), stunning views connect you to the environment at all times—even as you learn about it.



THE VISTA

We take relaxing in style in the great outdoors to new heights with The Vista. This open-air hideaway is the ultimate place for unwinding. Slip into the hot tub for a muscle soothing soak. Sink into a luxurious cocoon-style lounger with a favorite book (or drift off for a recharging nap). Head to one of the cabanas to enjoy cocktails with new friends or some quiet time on your own. The South Beach chic lounge area is the perfect spot for chilling in the sun or gazing up at the stars. Watch the brilliant sunrise. Enjoy cocktails. Recap your memories of the day with new friends. Watch the stunning sunset. The Vista is the hot spot in the Galapagos Islands to do it all.



SEASIDE RESTAURANT

In the Galapagos Islands, we feature menus crafted by our Michelin-starred chef in two distinct restaurants. Our chef is dedicated to creating an authentic dining program by sourcing the freshest, local ingredients and using the highest quality, sustainable seafood available. All this means you'll have a culinary journey in the Galapagos like no one else provides.

Seaside Restaurant is the main restaurant. It's a spacious, upscale casual space that features destination-inspired design elements and expansive windows throughout for stunning vistas that complement the mouthwatering meals you'll enjoy here—morning, noon, and night.



OCEAN GRILL RESTAURANT

Ocean Grill is an outdoor casual restaurant that offers panoramic views during the day and stunning, starlit skies at night. Here, there's every opportunity to enjoy both the destination and our culinary expertise daily. From grilling up the highest quality, sustainable seafood from the area for lunch to what we like to call Dinner Under the Stars, Ocean Grill is the envy of any destination restaurant around.



LEAVING THE WORLD A BETTER PLACE.

When you love traveling the planet as much as we do, being its steward is paramount. We're passionately focused on preserving the environment and partner with local organizations to create programs designed to improve the quality of life for the residents of the Galapagos Islands. In fact, since 2014, working in collaboration with the Galapagos National Park and our Naturalists, our guests have planted more than 16,000 scalesia trees in support of the Scalesia Reforestation effort—not only helping the wildlife that rely on them for survival, but assuring future generations get to experience this magical place just as you get to today.

Visit celebrity.com, call us at 1-888-751-9303, or contact your travel agent.

LOW-IMPACT TRAVEL

Your entire Galapagos experience practices the highest levels of environmental stewardship. For example, the chocolate placed on your pillow is from an eco-friendly local chocolate company. And the hull of your ship is painted with silicone to move her more efficiently and use less fuel.



THE "DAILY CATCH"

Through The Galapagos Fund we worked with the local community to create a fishing co-op that allows local fishermen to have a safe, clean processing plant in which to prepare, store, and more efficiently sell their catch. Today, we serve their deliciously fresh, locally sourced "daily catch" on board.



THE "GALAPAGOS TOMATO"

We have funded the construction of greenhouses and provided additional support for local farmers' associations through organic agriculture initiatives. One result of this process has been the creation of the hybrid "Galapagos tomato," which is now served along with other organic, locally sourced produce on all of our Galapagos sailings.



THE GALAPAGOS FUND

Celebrity Cruises® created The Galapagos Fund together with the Galapagos Conservancy to give our guests the opportunity to have a direct and lasting impact on the preservation of the region's rare and species-rich marine, wildlife, and plant ecosystems. Since 2006, Celebrity and our guests have contributed over \$1.5 million to this fund and other projects in the area.



Left: Planting a scalesia tree—part of the Scalesia Reforestation Project. Top left, clockwise: The Charles Darwin Research Station; harvest time; sightseeing on San Cristóbal Island; grilled local lobster tails.

WELCOME TO CELEBRITY'S GALAPAGOS.

A trip to the Galapagos Islands is so unique and so full of monumental experiences that we don't want you to spend a moment thinking about logistics or details. Our Galapagos adventures are blissfully all-inclusive, free of worry and planned with Celebrity luxury down to the last detail. So you immerse yourself in centuries-old landscapes and rare bird sightings, or hang out with an immense 70-year-old tortoise for the day. We've taken care of everything from pre- and post-cruise stays, flights, transfers, meals, beverages, shore excursions, and more. And, with two incredible 7-night itineraries to choose from—the Outer Loop and the Inner Loop—you have your choice of two incredible journeys to satisfy your sense of adventure.

Visit celebrity.com, call us at 1-888-751-9303, or contact your travel agent.

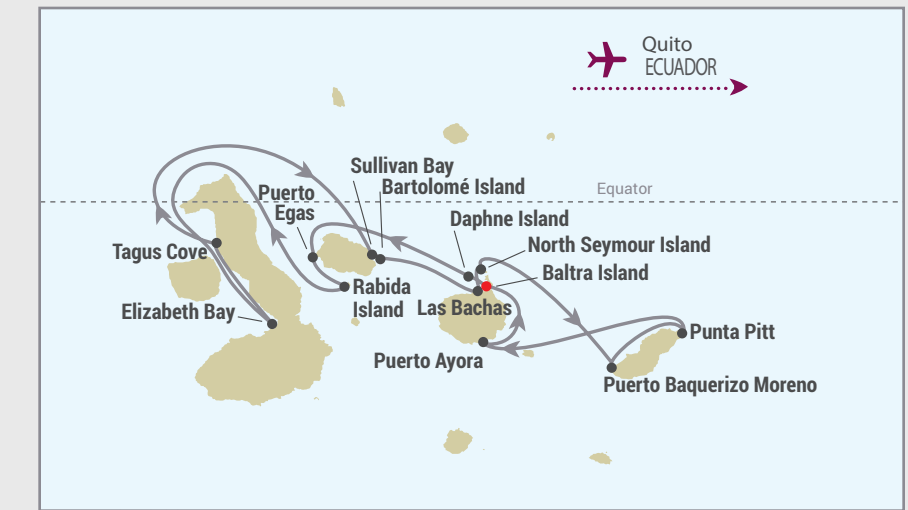


CELEBRITY FLORASM 7-NIGHT OUTER LOOP ITINERARY / ALL-INCLUSIVE BALTRA ROUND-TRIP CRUISE

DAY	PORTS OF CALL	ARRIVE	DEPART
1	Baltra Island (Galapagos)		2:30 PM
	Daphne Island (Galapagos)	5:00 PM	6:00 PM
2	Gardner Bay (Española)	7:00 AM	2:00 PM
	Suarez Point (Española)	3:00 PM	7:00 PM
3	Cormorant Point (Floreana)	7:00 AM	1:00 PM
	Post Office Bay (Floreana)	1:30 PM	8:00 PM
4	Moreno Point (Isabela)	7:00 AM	12:00 PM
	Urvina Bay (Isabela)	2:00 PM	7:00 PM
5	Espinoza Point (Fernandina)	7:00 AM	12:00 PM
	Vicente Roca Point (Isabela)	2:00 PM	7:00 PM
6	South Plaza (Santa Cruz)	7:00 AM	11:00 AM
	Dragon Hill (Santa Cruz)	3:00 PM	9:00 PM
7	Puerto Ayora (Santa Cruz)	7:00 AM	7:00 PM
8	Baltra Island (Galapagos)	7:00 AM	

Cruise departs year-round every other Sunday.

Celebrity Cruises' itineraries, times, and routes are subject to change. For the most up-to-date itinerary information and sailing dates, please visit celebrity.com.



CELEBRITY FLORA 7-NIGHT INNER LOOP ITINERARY / ALL-INCLUSIVE BALTRA ROUND-TRIP CRUISE

DAY	PORTS OF CALL	ARRIVE	DEPART
1	Baltra Island (Galapagos)		2:30 PM
	Daphne Island (Galapagos)	5:00 PM	6:00 PM
2	Puerto Egas (Santiago)	7:00 AM	12:00 PM
	Rabida Island (Galapagos)	3:00 PM	7:00 PM
3	Elizabeth Bay (Isabela)	7:00 AM	12:00 PM
	Tagus Cove (Isabela)	3:00 PM	7:00 PM
4	Sullivan Bay (Santiago)	7:00 AM	12:00 PM
	Bartolomé Island (Galapagos)	1:00 PM	7:00 PM
5	Las Bachas (Santa Cruz)	7:00 AM	12:00 PM
	North Seymour Island (Galapagos)	1:00 PM	9:30 PM
6	Puerto Baquerizo Moreno (San Cristobal)	7:00 AM	12:00 PM
	Punta Pitt (San Cristobal)	3:30 PM	6:00 PM
7	Puerto Ayora (Santa Cruz)	7:00 AM	7:00 PM
8	Baltra Island (Galapagos)	7:00 AM	

Cruise departs year-round every other Sunday.

THE GALAPAGOS ISLANDS AND BEYOND.

We know there are all sorts of world travelers, but there's one common item on their bucket lists. There's no better way to check the Galapagos Islands off your list than discovering this corner of the world with the most in-depth experiences and the most luxurious ship there.

We offer two 7-night itineraries and 10, 11, and 15-night all-inclusive vacations packages that include pre- and post- cruise adventures in Quito, Ecuador, Lima and Cuzco, Peru, and the extraordinary Sacred Valley and Machu Picchu.

CELEBRITY FLORASM 10- AND 11-NIGHT ALL-INCLUSIVE VACATIONS QUITO - GALAPAGOS

- Meet and greet services at the Quito airport for all airport transfers and tours.
- Hotel accommodations at the JW Marriott (2 nights pre-cruise and 1 or 2 nights post-cruise).
- VIP check-in and check-out at the hotel.
- Full-day guided tour of historical Quito, including a visit to the Equator Line.
- Meals and beverages while on tour and at the hotel, including a welcome dinner at a local gourmet restaurant.
- Round-trip airfare Quito-Baltra-Quito.
- 7-night all-inclusive Galapagos Cruise (choice of Outer or Inner Loop itineraries).
- Upon return to Quito, optional shopping tour to local craft market (time permitting) and farewell dinner at the JW Marriott. The 11-night package includes an additional night in Quito.
- Celebrity Concierge Service/tour escort.
- Park entrance fees and all gratuities.

CELEBRITY FLORA 15-NIGHT ALL-INCLUSIVE VACATION QUITO - GALAPAGOS - MACHU PICCHU

- Meet and greet services at the Quito airport for all airport transfers and tours.
- -Hotel accommodations at the JW Marriott (2 nights pre-cruise)
- VIP check-in and check-out at the hotel.
- Full-day guided tour of historical Quito, including a visit to the Equator Line
- Meals and beverages while on tour and at the hotel.
- 7-night all-inclusive Galapagos Cruise (choice of Outer or Inner Loop itineraries).
- 6-night Peru post-cruise expedition with luxury hotel accommodations.
 - 2 nights (based on return flight schedule) in Lima at the Westin, Lima hotel.
 - 2 nights in The Sacred Valley at the Tambo del Inca hotel.
 - 2 nights in Cuzco, the archaeological capital of the Americas and center of the former Inca Empire at the Belmond Hotel Monasterio.
 - Vistadome and Orient Express Hiram Bingham train service to and from Machu Picchu, the Lost City of the Incas.
- Round-trip airfare Quito/Baltra/Quito, from Quito to Lima, and round-trip Lima to Cuzco.
- Airport-hotel transfers.
- Celebrity concierge service/tour escort.
- Fully escorted exclusive tours in every location.
- Park entrance fees, gratuities and meals.

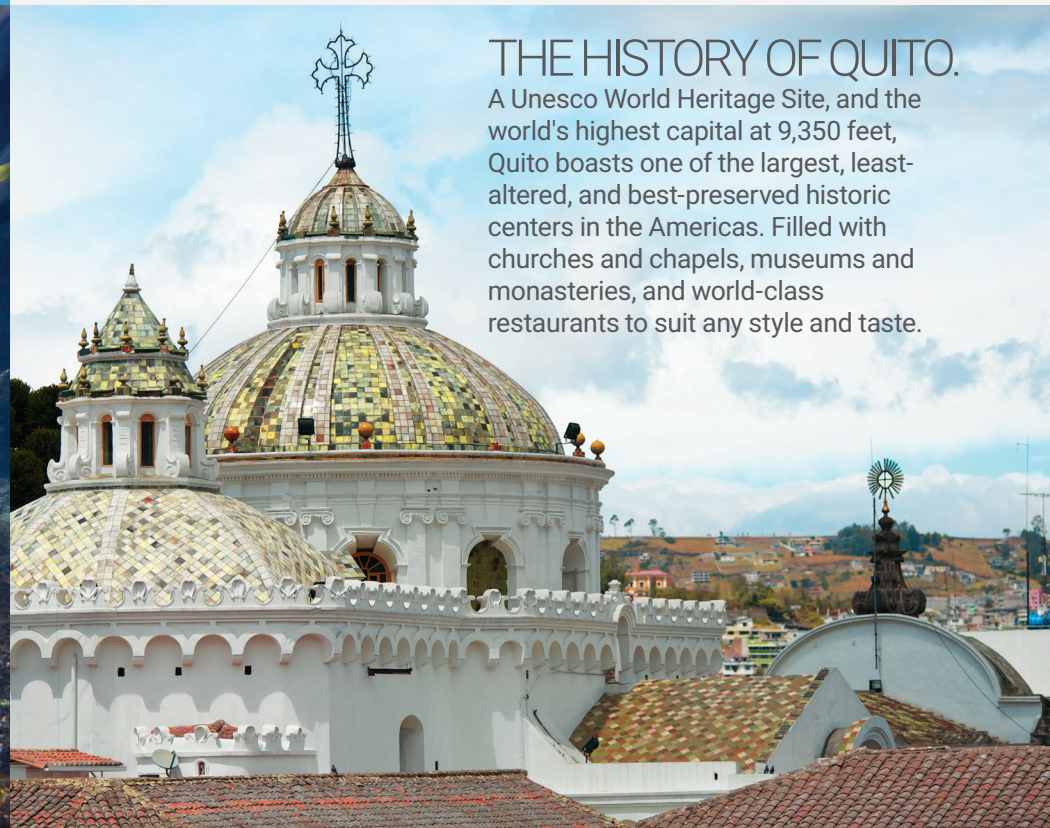
THE MYSTIQUE OF MACHU PICCHU

While many believe Machu Picchu was built as an estate for the Inca Emperor Pachacuti, many archaeologists believe that it was built as a religious center, important in the Inca culture. While we will never know all the answers, your visit here is sure to stir your soul and your imagination.



THE HISTORY OF QUITO.

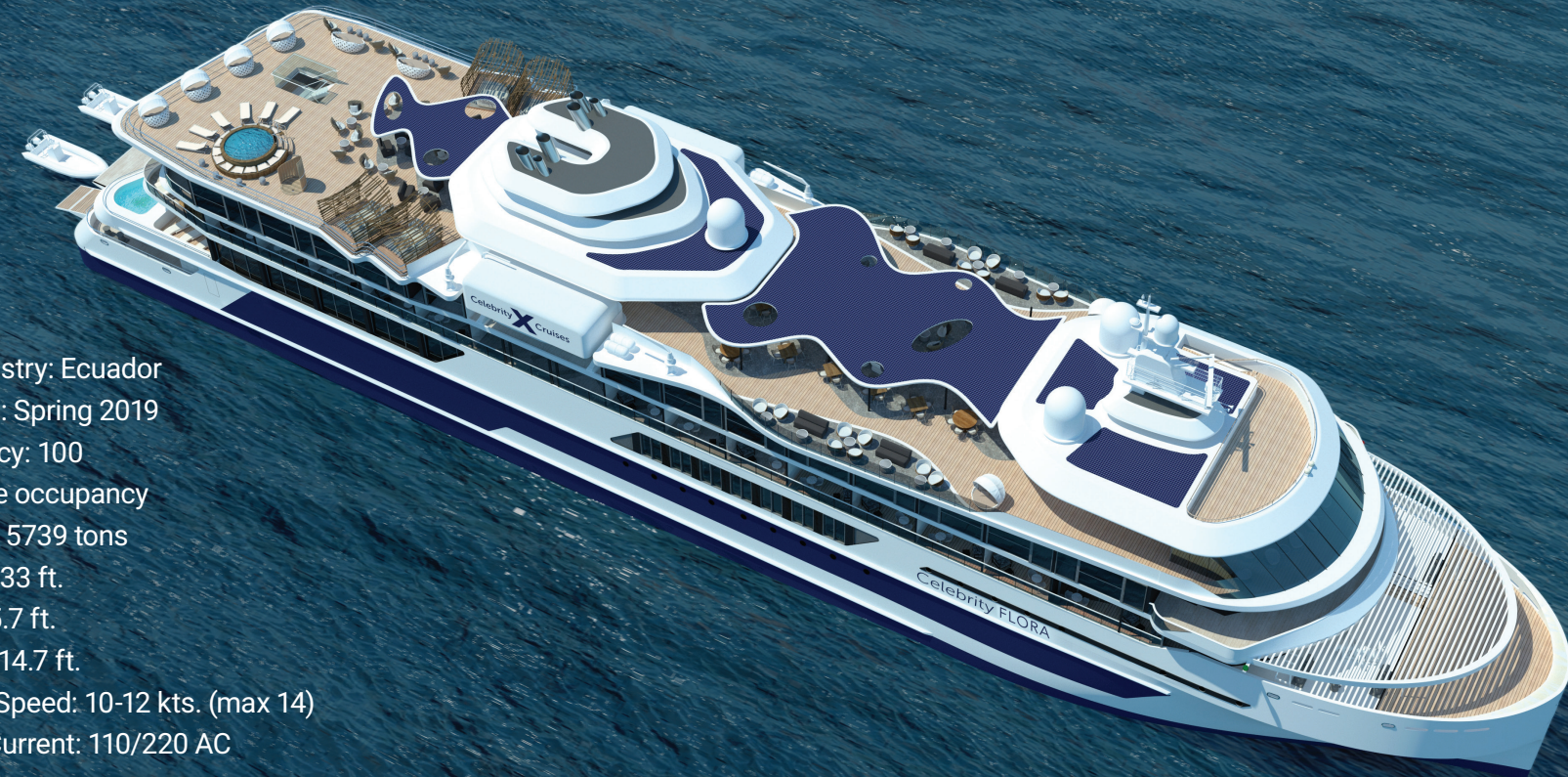
A Unesco World Heritage Site, and the world's highest capital at 9,350 feet, Quito boasts one of the largest, least-altered, and best-preserved historic centers in the Americas. Filled with churches and chapels, museums and monasteries, and world-class restaurants to suit any style and taste.



Visit celebrity.com, call us at 1-888-751-9303, or contact your travel agent.

For detailed day-by-day itineraries, please visit celebrity.com/galapagos.

CELEBRITY FLORA DECK PLANS



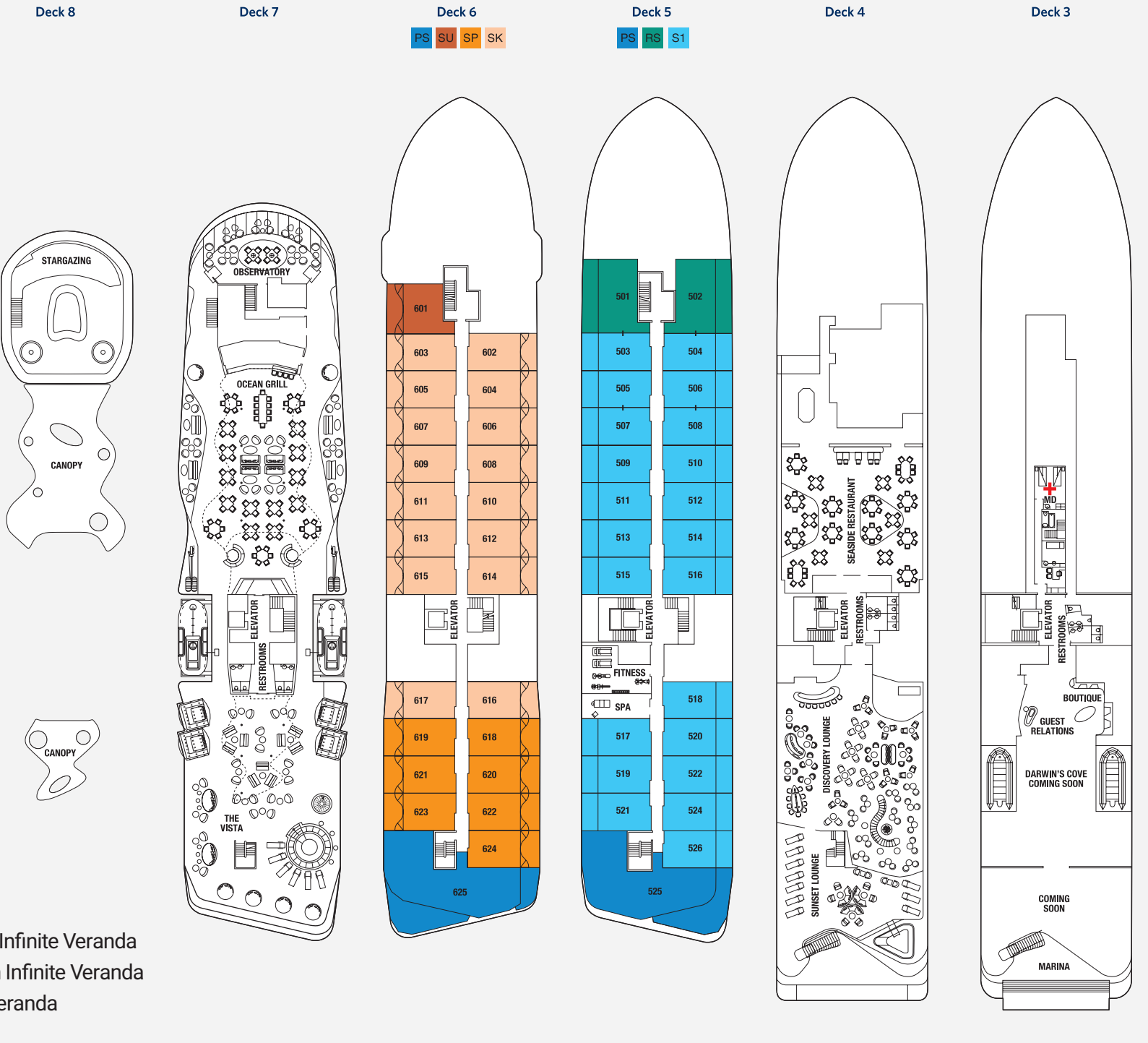
Ship Registry: Ecuador
 Inaugural: Spring 2019
 Occupancy: 100
 All double occupancy
 Tonnage: 5739 tons
 Length: 333 ft.
 Beam: 55.7 ft.
 Draught: 14.7 ft.
 Cruising Speed: 10-12 kts. (max 14)
 Electric Current: 110/220 AC

Every guest on Celebrity FloraSM is a suite guest, and will enjoy premium services and amenities including:

- Personal Suite Attendant
- Welcome bottle of Champagne or Blanc de Blancs sparkling wine
- Full in-suite breakfast, lunch, and dinner service
- Complimentary mini-bar with beer, soda, and water
- Unlimited Wi-Fi access
- 24/7 room service
- Laundry service twice per sailing*
- Daily Delectables delivered to your suite
- Celebrity Cruises Cashmere Bedding Collection
- 100% pure cotton linens
- Pillow menu
- Luxury bath amenities
- 100% cotton bath towels
- Plush, 100% cotton bathrobes
- Bedroom slippers
- Fresh fruit upon request
- In-suite filtered water station
- In-suite delivery of espresso and cappuccino
- Complimentary use of binoculars

And so much more...

*restrictions apply



- PS Penthouse Suite
- RS Royal Suite
- SU Ultimate Sky Suite with Infinite Veranda
- SP Premium Sky Suite with Infinite Veranda
- SK Sky Suite with Infinite Veranda
- S1 Sky Suite with Veranda

For more important information and Frequently Asked Questions, please visit celebrity.com

BOOKING AND PAYING FOR YOUR RESERVATION

BOOKING A CRUISE

Travel agencies can provide valuable advice and services to individuals considering a cruise. Celebrity encourages guests to book their Celebrity cruise through a travel agent of their choice who understands their individual needs. Any travel agent used by guests in connection with making arrangements for their Celebrity cruise, air accommodations, or any related travel, lodging and tours is their agent. Celebrity is not responsible for any failure by guest's travel agent to remit their deposits or payments to Celebrity, and they shall remain liable to Celebrity for any portion of the cruise or related fares that Celebrity did not receive. Similarly, Celebrity is not responsible for any failure by guest's travel agency to remit a refund from Celebrity to them. Celebrity's minimum age to sail unaccompanied on sailings originating in North America is 21. The minimum age to sail unaccompanied on sailings from South America, Europe, Asia, Australia and New Zealand is 18. The Company retains the right, on rare occasions, to raise the minimum age to sail unaccompanied on any sailing when local laws require or permit such a modification. This age limit will be waived for minor children sailing with their parents or guardians in adjacent staterooms; for underage married couples; and for active duty members of the United States or Canadian military. Certain other restrictions may apply, such as proof of marriage or proof of active duty military status.

DEPOSITS/PAYMENTS AND CANCELLATIONS/REFUNDS

Deposit requirements are per person unless otherwise noted. The minimum deposit amount must be received up to seven (7) days of booking, varying based on prior to departure. Final payment of the balance must be received at Celebrity's offices at least 120 days prior to sailing for Celebrity FloraSM. If guests booked their cruise through their travel agency, guests must provide payment to their travel agent. Travel agents: Make checks payable to Celebrity Cruises Inc., P.O. Box 025511, Miami, FL 33102-5511. For express mail or courier deliveries, send to Celebrity Cruises Inc., 1050 Caribbean Way, Miami, FL 33132, Attn: Cash Processing Department. If guests booked their cruise directly with Celebrity, guests may pay via credit card, money order or personal check. Celebrity accepts Visa[®], MasterCard[®], American Express[®], Diners Club International[®], and Discover[®] cards for individual bookings. Cancellations must be made by guests or their travel agent. Depending on when the cruise is cancelled, a cancellation charge may apply. See chart for applicable late-cancellation charges for cruises. (Cancellation charges for groups vary from those for individuals.) No refunds will be made in the event of a no-show or if guests interrupt their cruise. All appropriate refunds will be made through their travel agent. Celebrity is not responsible for any payments guests made to their travel agent that are not paid to Celebrity, or any refunds that Celebrity has provided to their travel agent. Travel agents may impose their own charges in connection with a cruise. For example, the

travel agent may charge a flat service fee for assistance with your reservations and a value-added charge for additional amenities or services being provided by the travel agent. In addition, travel agents may impose their own cancellation fees. Any charges or fees of this nature are a matter strictly between the guest and their travel agent.

CELEBRITY FLORASM

Deposit requirements: A deposit must be made in order to reserve accommodations and receive a written confirmation. **Minimum Deposit Requirements:** \$900 USD per person

CELEBRITY FLORA

Charges for late cancellation of cruises:
DAYS PRIOR TO SAILING CHARGES (PER PERSON)
119-89 - Deposit \$900
88-43 - 50% of Total Fare (Taxes, Fees, and Port Expenses excluded)
42-22 - 75% of Total Fare (Taxes, Fees, and Port Expenses excluded)
21 Days or Less - No refund except for Taxes, Fees, and Port Expenses

SERVICE FEES

Any changes or cancellations to your cruise or air arrangements (to which a cancellation charge does not apply) may be subject to additional fees, such as service fees for documents.

DOCUMENTATION

Guests are responsible for bringing all travel documents, such as passports, visas, proof of citizenship, and proof of mandatory inoculations, required for boarding the vessel in Ecuador and for entry or re-entry into any countries through which their voyage or other travel arrangements take them. **At a minimum, each guest is required by Ecuadorian law to have a valid passport with at least six months validity from the departure date from Ecuador.**

Guests who do not possess the proper documentation may be prevented from boarding their flight or ship, or from debarking or entering a country, and may be subject to fines.

Also, it is important that the name on the reservation be exactly as it is stated on the passport or other official citizenship document. If the guest's name has changed since the document was issued (i.e. marriage/divorce), it is required that the document be updated with the new name, or provide official supporting document(s) of the name change. Otherwise, it may result in delay or possible denial of boarding. Visit celebritycruises.com/documentation for up-to-date information on documentation.

For additional passport information, visit www.travel.state.gov or the passport service of your choice, such as CIBT - Passport And Visa Service at www.cibt.com/celebrity. For more information on Special Groups (requirements for U.S. and Canadian children, groups of children, U.S. Military...), please visit www.cbp.gov/travel.

GUEST LIABILITY

If, as a result of guests' lack of proper documentation, a fine or other cost is incurred by Celebrity Cruises, guests agree to indemnify Celebrity Cruises for such expenses. It is the sole responsibility of the guest to identify all travel, inoculation and health requirements and obtain and have available, when necessary, the appropriate valid travel documents, such as passports and visas; inoculation documents, such as Yellow Fever certificates; and other health requirements.

GUEST CONDUCT

GUEST CONDUCT POLICY

The Guest Conduct Policy (GCP) is a written code of behavior that is expected of all guests sailing on a Celebrity cruise vacation. It is available for review online at celebrity.com and at the Guest Relations Desk. A copy also is placed in each guest stateroom. The GCP is intended to help ensure that all guests are able to participate in a safe and enjoyable cruise experience. Failure to act in accordance with the GCP will result in consequences; up to removal from a ship at the next port-of-call, intervention by law enforcement, and denial of boarding on future cruises.

REFUSAL OF BOOKING REQUEST OR PASSAGE

We are delighted to have provided safe and enjoyable cruises to our guests over the years. To facilitate our ability to continue to provide safe and enjoyable cruises to our guests, we reserve the right to refuse to accept a booking request from an individual or group and reserve the right to cancel an existing reservation. For more details, see our Refusal to Transport Policy and Guest Conduct Policy, both of which are available online at celebrity.com. The Refusal to Transport Policy provides, among other things, that a booking request may be denied, for example, where the guest's conduct on a prior cruise has resulted in disciplinary measures by Celebrity Cruises, Royal Caribbean International[®], Azamara Club Cruises[®] or any other affiliated cruise line.

Celebrity is not liable for its refusal to transport any passenger or for its removal of any guest in accordance with these policies. In addition, Celebrity shall not be required to refund any amount paid by any guest who must leave the cruise vacation prematurely pursuant to either policy, nor shall Celebrity be responsible for lodging, meals, return transportation or other expenses incurred by the guest or for any consequential or punitive damages.

Any dispute between a guest and Celebrity in connection with a guest's cruise booking or cruise shall be litigated, if at all, in and before a court located in Miami, Florida, U.S.A., to the exclusion of the courts of any other state, territory, or country.

PASSAGE TICKET CONTRACT

The transportation of guests and baggage on Celebrity Flora is governed by the terms and conditions of the Cruise Ticket Contract included as part of the cruise documentation. The Cruise Ticket Contract, which is between the carrier Islas Galapagos Turismo y Vapores C.A. (hereafter "IGTV") and guests for sailings on Celebrity

Flora limits their rights against both the Carrier and Celebrity. Among other things, the Cruise Ticket Contract sets forth limitations on the time frames in which claims may be made and suits filed against the Carrier or Celebrity. It is important that guests read all of the terms and conditions of the Cruise Ticket Contract, paying particular attention to sections 11 and 12. The carrier for Celebrity Flora sailings is Islas Galapagos Turismo y Vapores C.A. (hereafter "IGTV") NOTE: A Cruise Ticket Contract must be signed by each guest prior to boarding. (Copies are available upon request and may be available online at celebrity.com/cruiseticketcontract.)

The terms and conditions set forth in this brochure shall also apply. Any and all information contained in this brochure, including prices and terms and conditions, is subject to change at any time without notice. In the event of any conflict between (on the one hand) the terms and conditions of this brochure, any advertisements or offers related to a Celebrity Flora voyage, or any oral or written representation of any Carrier or Celebrity representative and (on the other hand) the Cruise Ticket Contract, the terms of the Cruise Ticket Contract shall govern.

GUESTS WITH DISABILITIES AND SPECIAL NEEDS

Please note the ability to accommodate guests with special needs aboard the vessels in the Galapagos Islands is limited. The Galapagos vessels cannot accommodate guests who are full-time wheelchair users. In addition, the land portion of these vacations, including Quito and Galapagos in Ecuador, as well as Lima, Cuzco and Machu Picchu in Peru are not suited to persons who are full-time wheelchair users. A guest on a Celebrity Galapagos vacation must be able to ascend or descend steps into a motor coach, walk and/or climb over uneven ground for extended distances, get on and off Zodiacs on both wet and dry landings, and be able to climb stairs. Celebrity Flora does not offer accessible staterooms.

Guests should be reminded that Celebrity is not required to provide personal assistance (e.g. assisting with eating, dressing, toileting, lifting, etc.), and therefore, guests requiring assistance with these functions should consider these needs when making a booking. Guests should contact our Access Department in writing via e-mail at special_needs@celebrity.com or via fax at 954-628-9622.

ONBOARD PHYSICIANS

Celebrity Flora is equipped with a medical facility. One licensed Physician (licensed under Ecuadorian law) is normally in attendance on board. The medical services and medications kept on board are extremely limited, and guests must bring an adequate supply of any specific medications they need. The medical facility is not intended or designed to serve as a clinic for guests, and the use of those facilities (including any medications obtained there from) will result in charge to the guest.

LIABILITY

CELEBRITY'S LIABILITY

Guests release Celebrity from any and all claims for loss or damage to baggage or property, or for personal injuries or death, or for loss from delay, arising out of the acts, omissions, or negligence of any independent contractors, such as air carriers, hotels, shore providers, restaurateurs, transportation providers, medical personnel, or other providers of services or facilities. Under no circumstances does Celebrity's responsibility extend beyond the vessel. All arrangements made for the guest with independent contractors are made solely for the convenience of the guest and are at the guest's risk. Celebrity disclaims all liability for damages for emotional distress, mental suffering, or psychological injury of any kind, under any circumstances, except to the extent such disclaimer is prohibited by 46U.S.C.A4183c.(b).

GUEST LIABILITY

Each guest agrees to indemnify Celebrity for all penalties, fines, charges, losses, or expenses incurred or imposed upon Celebrity by virtue of any act, omission, or violation of law by the guest. Each guest, or if a minor, his or her parent or guardian, shall be liable to and shall reimburse Celebrity for all damage to the ship and its furnishings and equipment, or any property of the ship, caused by any willful or negligent act or omission on the part of the guest.

SAFETY AND SECURITY

Q: Are there security professionals on board?

A: Yes, Celebrity ships are staffed with a Chief Security Officer and dedicated onboard security team that sails with the ship at all times.

Q: Are cruise destinations safe?

A: Celebrity offers vacations to locations where guests want to travel; and while the safety and security of our ships, guests and crew is very important to us, we recognize that people have differing opinions and thresholds for what they consider safe and secure.

Information about the security situation in destinations around the world is publicly available on regularly updated travel security and government websites. Just as for land vacations, this is helpful and important information for guests to consider in preparation for a cruise vacation. We strongly recommend that guests and their travel agents obtain and consider such information when making travel decisions.

TRAVEL PROTECTION

Q: Is cancellation coverage available?

A: The CruiseCare[®] Cancellation Penalty Waiver Program waives the non-refundable cancellation provision of your Cruise Ticket Contract and pays you the value of the unused portion of your cruise vacation in the event that you or your traveling companion need to cancel the cruise for covered reasons. If you need to cancel for any other reason, you may be eligible for Cruise Credits equal to 75% of the non-refundable value of your prepaid cruise vacation.

Q: Will guests need extra insurance?

A: Because our liability for loss or damage is limited by the Cruise Ticket Contract, we recommend that all guests check their own insurance coverage prior to departure. For some peace of mind, Celebrity Cruises' CruiseCare Travel Insurance Program offers competitive medical, baggage, and trip delay coverage for the duration of their cruise vacation.

Q: Is there any baggage protection?

A: Our optional CruiseCare Travel Insurance Program provides up to \$1,500 in baggage protection due to loss, theft, or damage. Should guests' bags be delayed by the airline for more than 24 hours, they may be reimbursed up to \$500 toward any purchase of necessary items.

CELEBRITY CRUISECARE

CruiseCare Cancellation Penalty Waiver Program

If your plans go awry and you cancel—or interrupt—your cruise vacation (for covered reasons), Celebrity Cruises will waive the non-refundable cancellation provision of your Cruise Ticket Contract and pay you the value of the unused portion of your prepaid cruise vacation. Also, should you or your traveling companion need to cancel the cruise for any other reason, you may be eligible for Cruise Credits (up to 75% of the non-refundable, prepaid cruise vacation cost). Brought to you by Celebrity Cruises[®].

**For NY residents, the CruiseCare Cancellation Penalty Waiver Program is underwritten by Arch Insurance Company, Jersey City, NJ; NAIC#11150 under Policy series LTP2013.*

CruiseCare Travel Insurance Program

CruiseCare provides coverages to protect you during your covered trip, as follows:

- Trip Delay—Up to \$500: If you miss the departure of your trip due to covered carrier-caused delays or other covered reasons, CruiseCare Travel Insurance reimburses you for additional accommodations, meals and "catch-up" transportation expenses.
- Baggage Protection—If guest baggage or personal effects are lost, stolen or damaged, CruiseCare Travel Insurance will cover up to \$1,500. If guest bags are delayed or misdirected for more than 24 hours, CruiseCare Travel Insurance may reimburse you up to \$500 for the purchase of necessary personal items.
- Medical Expenses—Up to \$10,000: Should guests become injured or sick during their vacation, CruiseCare Travel Insurance will reimburse them for necessary medical expenses for up to one year from the date of their accident or illness. This coverage is especially important, as Medicare and many private insurance policies generally do not cover guests outside of the U.S. or Canada, and many HMOs do not cover them outside their provider area.
- Emergency Evacuation—Up to \$25,000: In the event that a covered illness or injury requires air or ground transportation to a specialized facility or to return to their place of residence, CruiseCare Travel Insurance provides for covered medical services and supplies (coordinated by our 24-hour assistance provider to help ensure their safe transport).

Underwritten by Arch Insurance Company, Jersey City, N.J.; NAIC#11150 under Policy series LTP2013

CruiseCare Worldwide Emergency Assistance

You won't have a care in the world with access to 24/7 global network to assist you on your travels, including CareFree[™] Travel Assistance, Medical Assistance and Emergency Services. CareFree[™] Travel Assistance includes assistance with travel arrangements (such as luggage locator), pre-trip information (such as passport requirements and weather advisories), as well as documents and communication (including lost travel documents and live email/phone messaging to family and friends). Medical consultation and monitoring, coordination in the event of a medical evacuation or repatriation, and referrals to emergency legal services are also available 24/7. Provided by On Call International.

Celebrity CruiseCare Help

If you have any questions concerning Celebrity CruiseCare Vacation protection plan and pricing, please call Celebrity's CruiseCare Help Line at 800-797-4516 or visit celebrity.com/cruisecare

DISCLAIMERS

INFORMATION SUBJECT TO CHANGE

Each Carrier's itineraries and routes, pricing, policies and procedures are constantly evolving. Celebrity has strived to ensure that all information listed in this brochure was correct at the time of printing. However, any information contained herein is subject to change without notice, and each Carrier and Celebrity reserves the right to refuse to honor any prices or other information that were erroneously printed or quoted. Celebrity reserves the right to correct errors or omissions. Maps are for informational purposes only.

CELEBRITY CRUISES[®]

Celebrity Cruises sailings may be operated by Celebrity Cruises Inc., or its affiliates, including but not limited to RCL Cruises Ltd. and, with respect to Celebrity Xpedition[®], Celebrity XperienceSM, Celebrity XplorationSM, and Celebrity FloraSM sailings in the Galapagos Islands, IGTV or Oceanadventures S.A. See guest's passenger ticket contract for the identity of the specific operator/carrier for your sailing. Your operator/carrier, or another member of the Celebrity group of companies, acts as an intermediary between you and any airlines, hotels, transport operators, shore excursion providers, and other contractors providing any third party services to you. For more details, see passenger ticket contract.